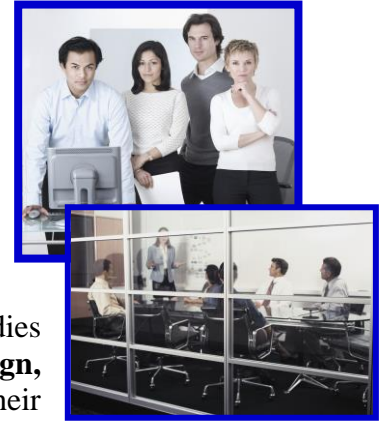


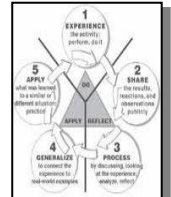
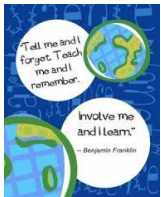
Fast Track for Undergraduate *Selected Studies* Students to a Master of Science in Instructional Design, Development & Evaluation

Interested in careers related to instruction and learning outside of the K-12 context? There continues to be a growing demand for instructional designers who are prepared to create educational materials for children through adult populations using a variety of delivery platforms from face-to-face instruction to e-learning. **Professionals** in this career path may work in business and industry, government and military, healthcare, non-for-profit, museums, Parks and Recreations, higher education, and a variety of other contexts around the world!



This option is designed for highly motivated and focused *Selected Studies* students interested in pursuing a **Master of Science in Instructional Design, Development & Evaluation (MS IDD&E)** upon completion of their undergraduate degree. Students work closely with their advisor to develop a plan of study that will allow them to complete a majority of their undergraduate degree courses prior to their senior year. This provides an opportunity to take graduate level courses in your senior year.

Students who maintain at least a 3.0 GPA are eligible then to **apply for** the MS IDD&E during their junior year. Admitted students, with advisor approval, will take a selection of 12-15 graduate credits toward their Master's degree during their senior year. Upon bachelor's degree graduation, students **matriculate** into the MS IDD&E degree program and complete the final 15-18 graduate credit hours in the next year. By successfully completing a majority of credits and producing a professional portfolio students may be able to complete campus-based activities by December.



BENEFITS

This option **saves tuition costs and time**: Students can apply undergraduate financial aid toward graduate credits during their senior year. By completing 12-15 credits during senior year and 15-18 credits the following year, students may get into the job market early, possibly by December.

PROPOSED SCHEDULE

Suggested course summer after sophomore or junior year to explore and prepare for IDD&E...
IDE 456 Computers as Critical Thinking tools (Summer only, online course)

Undergraduate Senior Year

FALL

IDE 621 Principles of Instruction and Learning
 IDE 631 Instructional Design and Development 1

WINTERLUDE (*substitute for IDE 632 sp)

IDE 756 Design & Mgt of Distance Educ (online)

SPRING

IDE 632 Instructional Design and Development II*
 IDE 641 Technique in Educational Evaluation
 IDE 712 Analysis for Human Performance Tech Decisions (Saturday classes)

Graduate Year

SUMMER

IDE 737 Advanced Instructional Design (online)
 IDE 772 Edu tech in International Settings (online)

FALL

IDE 552 Digital Media Production
 IDE 611 Tech for Instructional Settings (online)

SPRING

IDE 761 Strategies in Educational Project Management (online)

(Portfolio also required for graduation, see handbook)

Please note: Summer and Winterlude courses are depended on enrollments, thus if not offered will affect completion timing.

IDD&E Master of Science Degree Handbook contains more information on this degree.
SEE: idde.syr.edu -- OR -- CALL: 315-443-3703 -- OR -- VISIT: 330 Huntington Hall